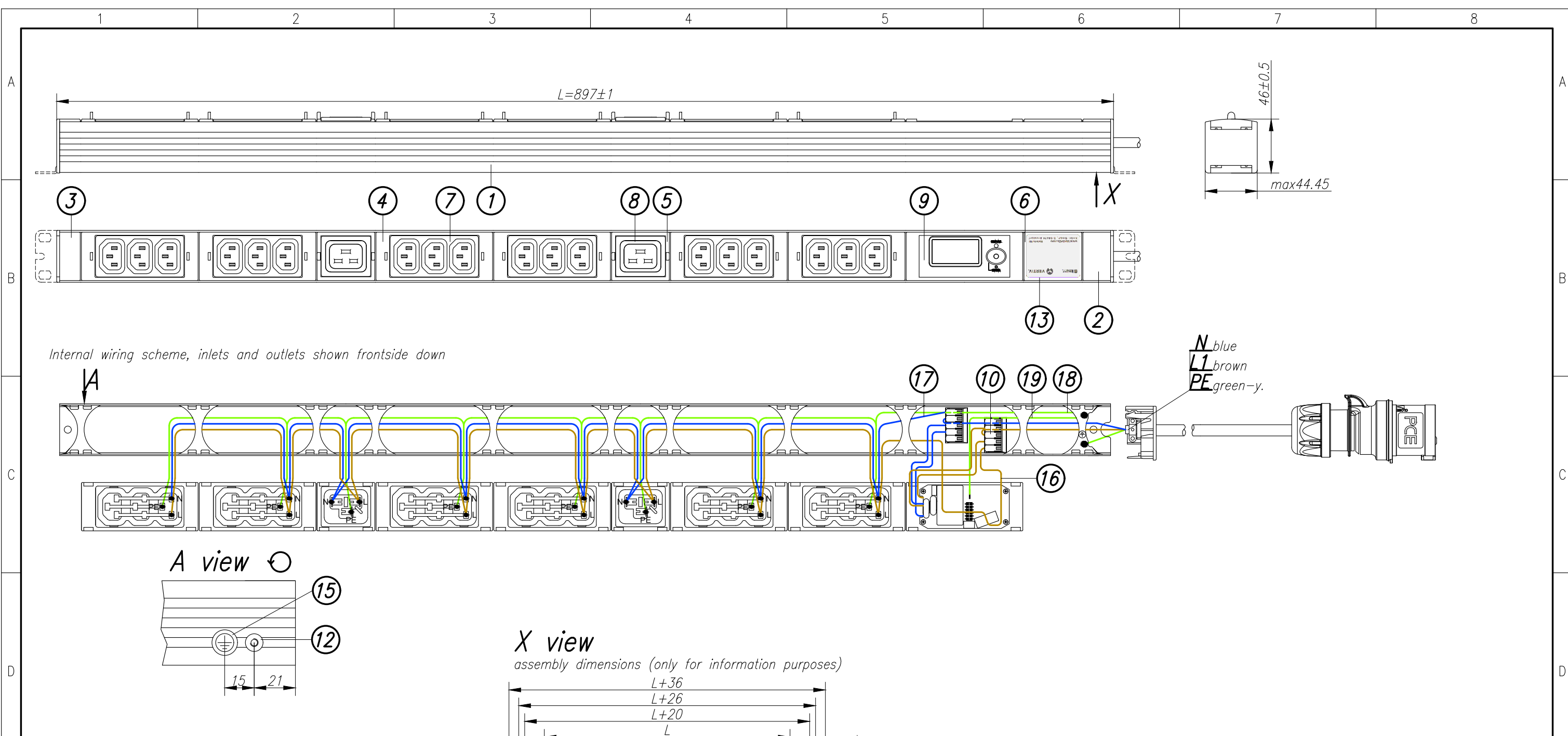


Disclosure and photocopying of this document, exploitation and communication of its contents are not permitted, unless permission is expressly granted. All rights are reserved.

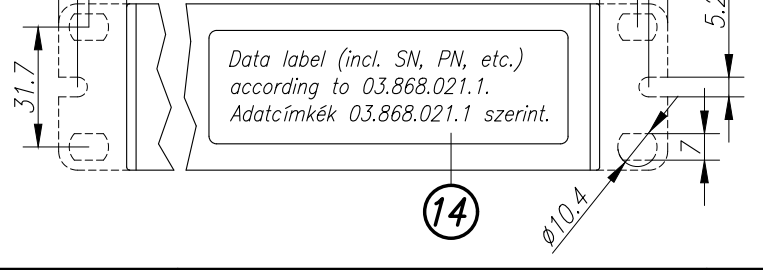


Technical data:
 - with DI-STRIP D module
 - 18x IEC60320 Sheet F 10A socket
 socket spacing 24mm, torsion of sockets 0°
 - 2x IEC60320 Sheet J 16A socket
 socket spacing 250mm, torsion of sockets 90°
 - Operating temperature: 0 ... +50 °C

knürr. VERTIV. DI-STRIP D

Input 100-240 Vac, 50-60 Hz, max. 16 A
 Outlets max. 16 A (Sheet J), max. 10 A (Sheet F)

www.VertivCo.com Made in HU
 Knürr GmbH, D-94424 Arnstorf



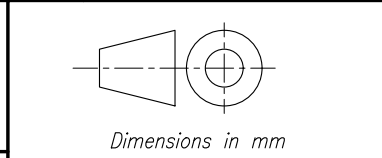
16	1	EA	Vezeték barna 1,5mm ²	Electric cord brown	03.867.009.1.004	-	L=1138
17	1	EA	Vezeték kék 1,5mm ²	Electric cord blue	03.867.009.1.005	-	L=1088
18	1	EA	Vezeték zöld-sárga 1,5mm ²	Electric cord green-yellow	03.867.009.1.006	-	L=1188
19	1	EA	Vezeték zöld-sárga 1,5mm ²	Electric cord green-yellow	03.868.004.1.002	-	L=150(EO-SZ6.3)

A belső vezetékvezés komponensei. / Components of internal wiring.

Load rating:
 100-240 Vac, 50-60 Hz
 Input: 1x 16 A
 Output: 10 A (Sheet F), 16 A (Sheet J)

Approvals/certificates:
 - CE marking according to: LVD (low voltage directive), EMC (electromagnetic compatibility) RoHS (restriction of hazardous substances)
 - BV-BG certification (factory inspected)

Power cord:
 Type: H05VV-F 3x1,5mm², black
 Length: 2,5m
 Plug: IEC60309 1ph/N/PE 6h



General tolerances		Finish	Material	Sheet
ISO 2768-m				1/1
Drawn	18.01.2017	Kovács	Description	
Checked	18.01.2017	Szabó	DIS-EDV 2P3W-16A 18N-20	
Approved				

Material/Finish:
 Chassis: closed sheet steel extrusion, zincplated, powder-coated texture
 Plastic parts: Vampamid 6 0024 VO (UL94) or similar, recyclable
 Internal conduction: brass conductor rails and copper wires
 Internal copper wires: H05V2-K 1mm², H07V-K 1.5mm²

Color:
 Chassis: RAL7035 light grey
 Plastic parts: RAL7021 black grey

Packaging:
 Packing box (csomagolódoboz)
 Supply schedule:
 Socket strip (1 piece)
 Mounting bracket (2 pieces) 3.768.2608
 User manual (1 piece) 03.300.999.1

Rev.	Change	Date	Name
B	18230	03.10.17	Kovács

VERTIV

Drawing no. **03.606.820.1**

Gross weight	Net weight	External dimensions of packing box
1,97 kg	1,71 kg	1030x60x100 mm

Weitergabe sowie Vervielfältigung dieser Unterlage, Verwertung und Mitteilung ihres Inhalts nicht gestattet, soweit nicht ausdrücklich zugestanden. Alle Rechte vorbehalten.